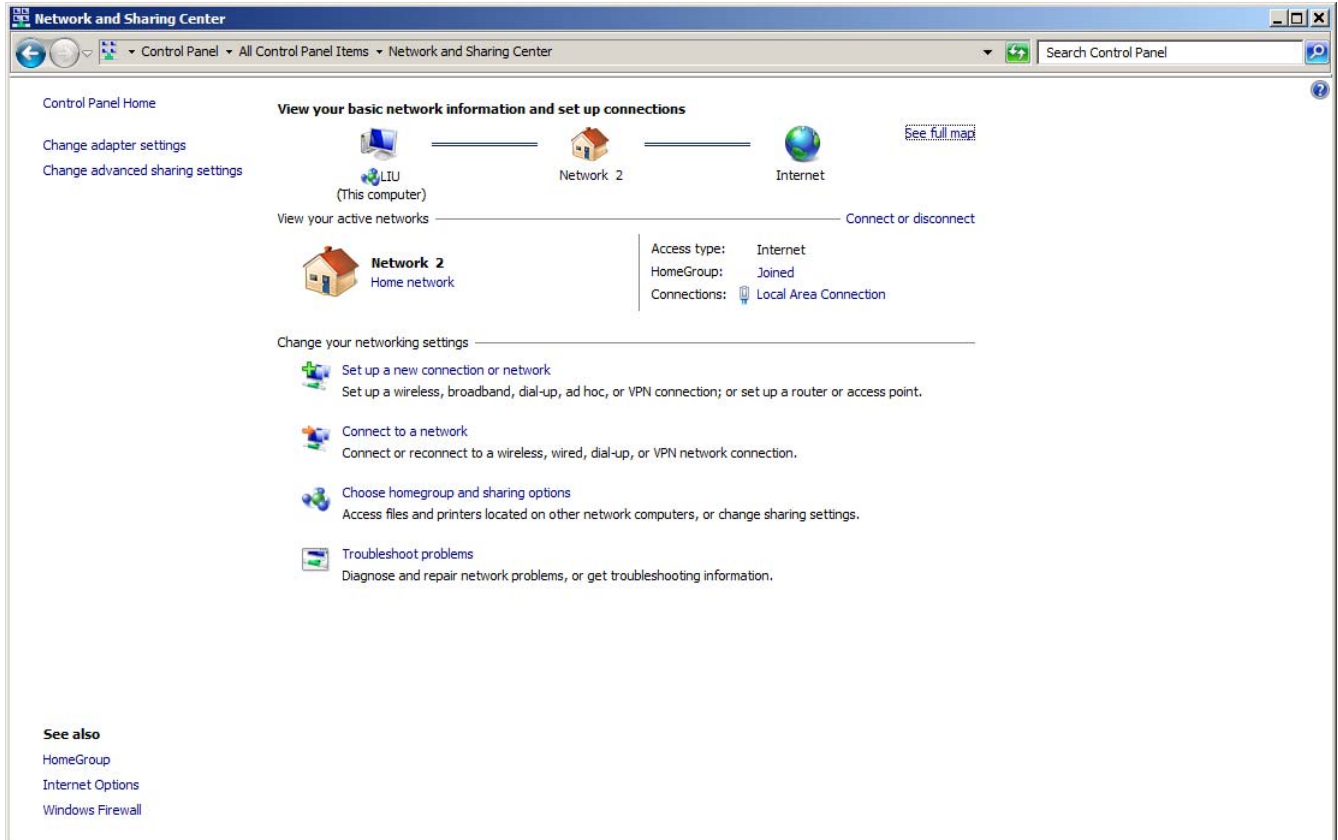


# DigitalOcean VPN 连接指南 (for Win7)

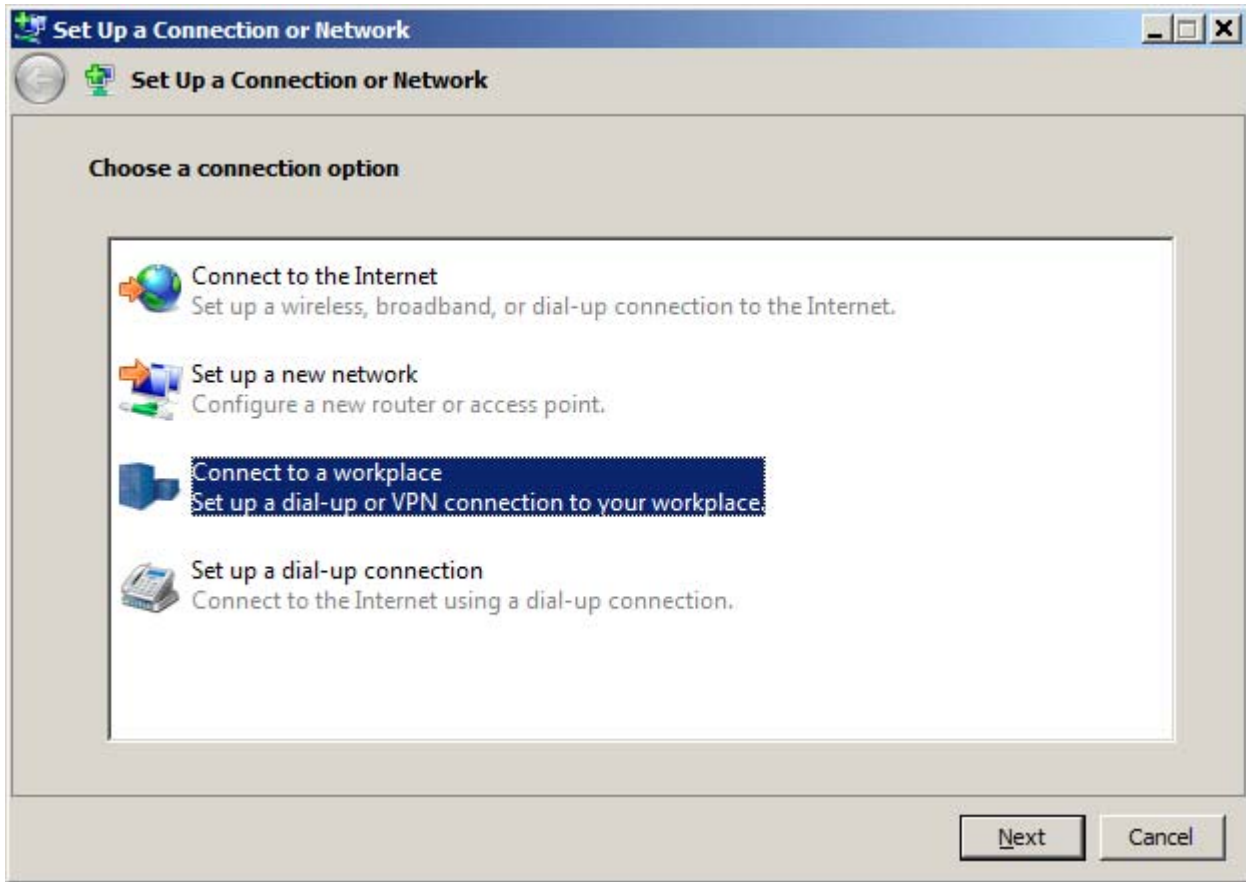
时间:2015年2月25日

环境: Windows 7

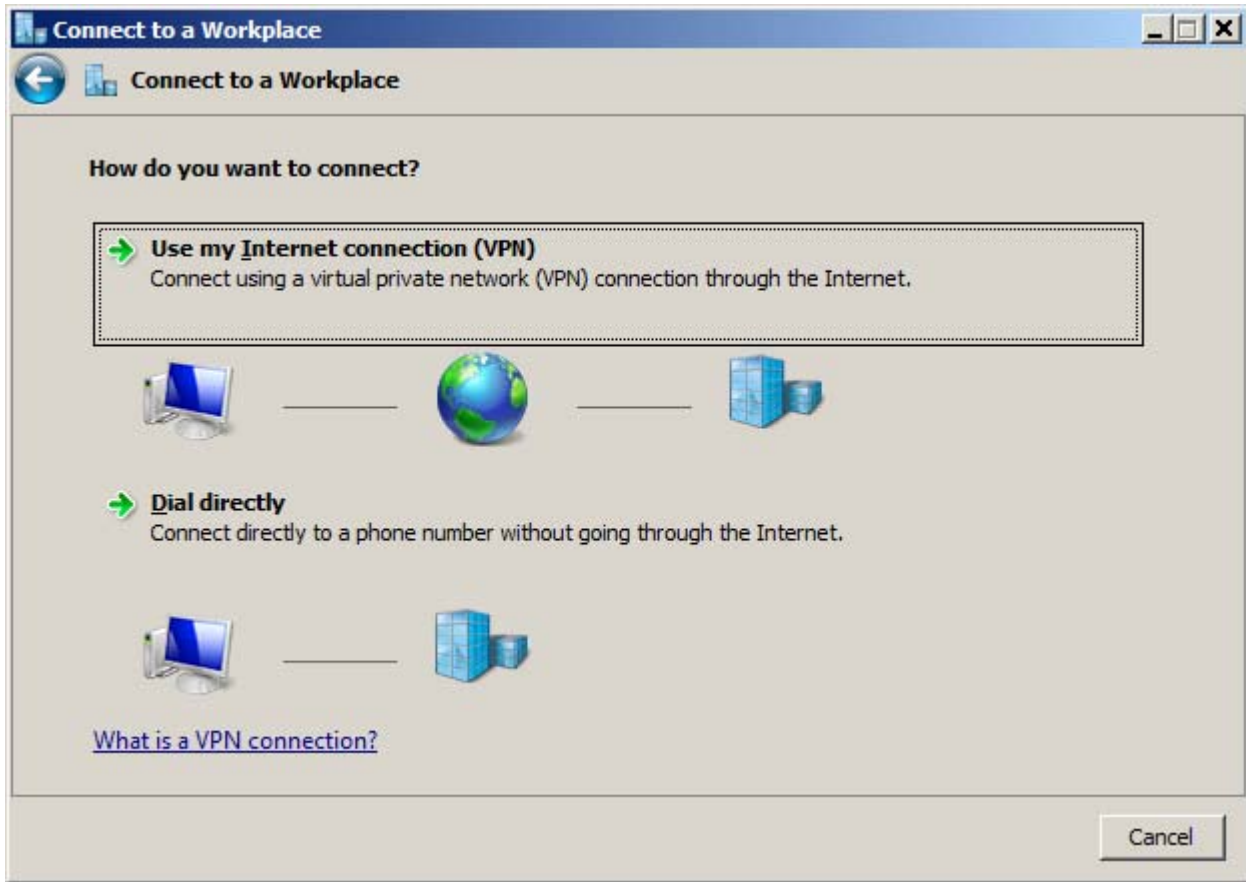
1, 在网络设置里选择, 「Set up a new connect or network」。我这里只有英文系统, 中文系统用户可以自己看一下对应选哪个。



2, 出现设置向导, 和下图一样进行设置,



3, 如图设置,



4, 如图设置, 「Destination name」可以随便填入,

**Connect to a Workplace**

← **Connect to a Workplace**

**Type the Internet address to connect to**

Your network administrator can give you this address.

Internet address:

Destination name:

Use a smart card

Allow other people to use this connection  
This option allows anyone with access to this computer to use this connection.

Don't connect now, just set it up so I can connect later

**Next** **Cancel**

5, 如图设置, 并填入用户名和密码,

**Connect to a Workplace**

← **Connect to a Workplace**

**Type your user name and password**

User name:

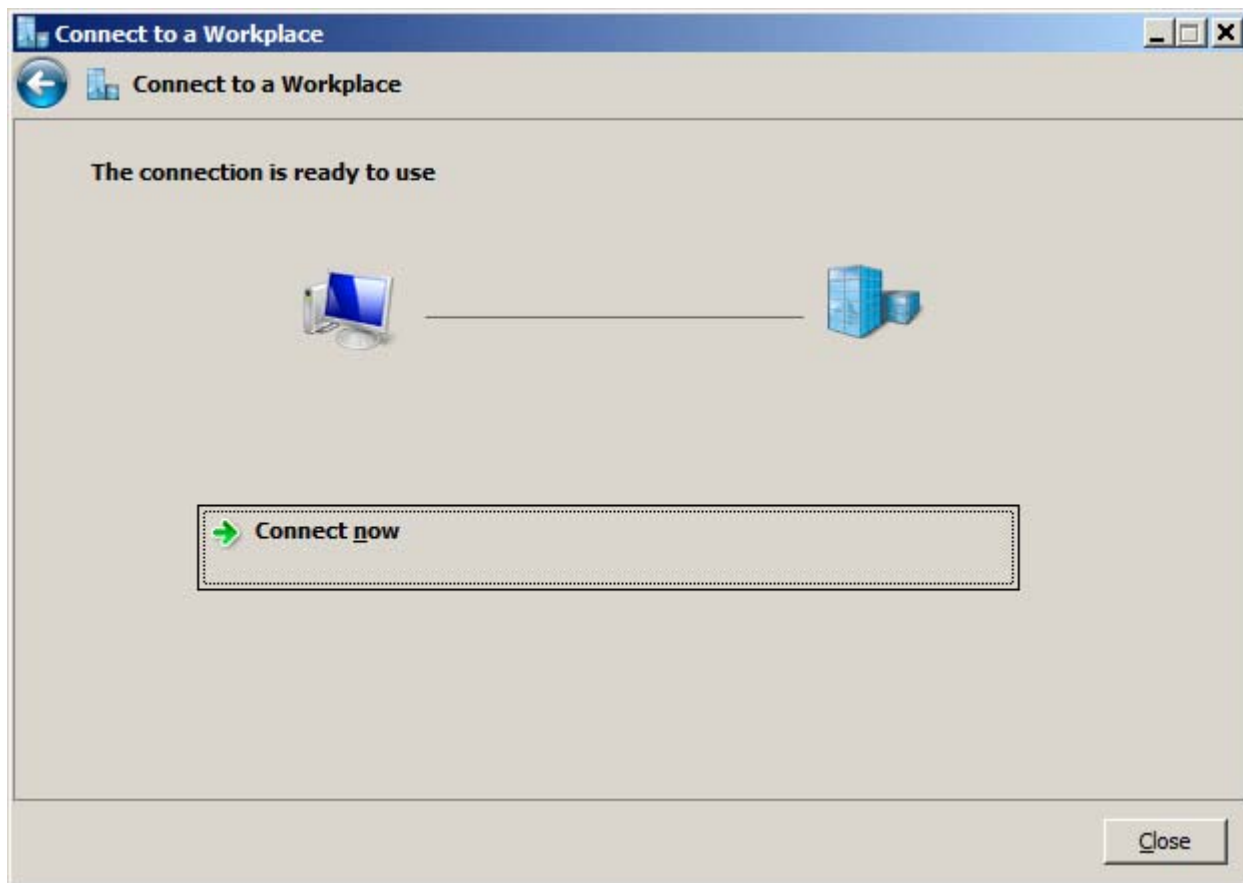
Password:

Show characters

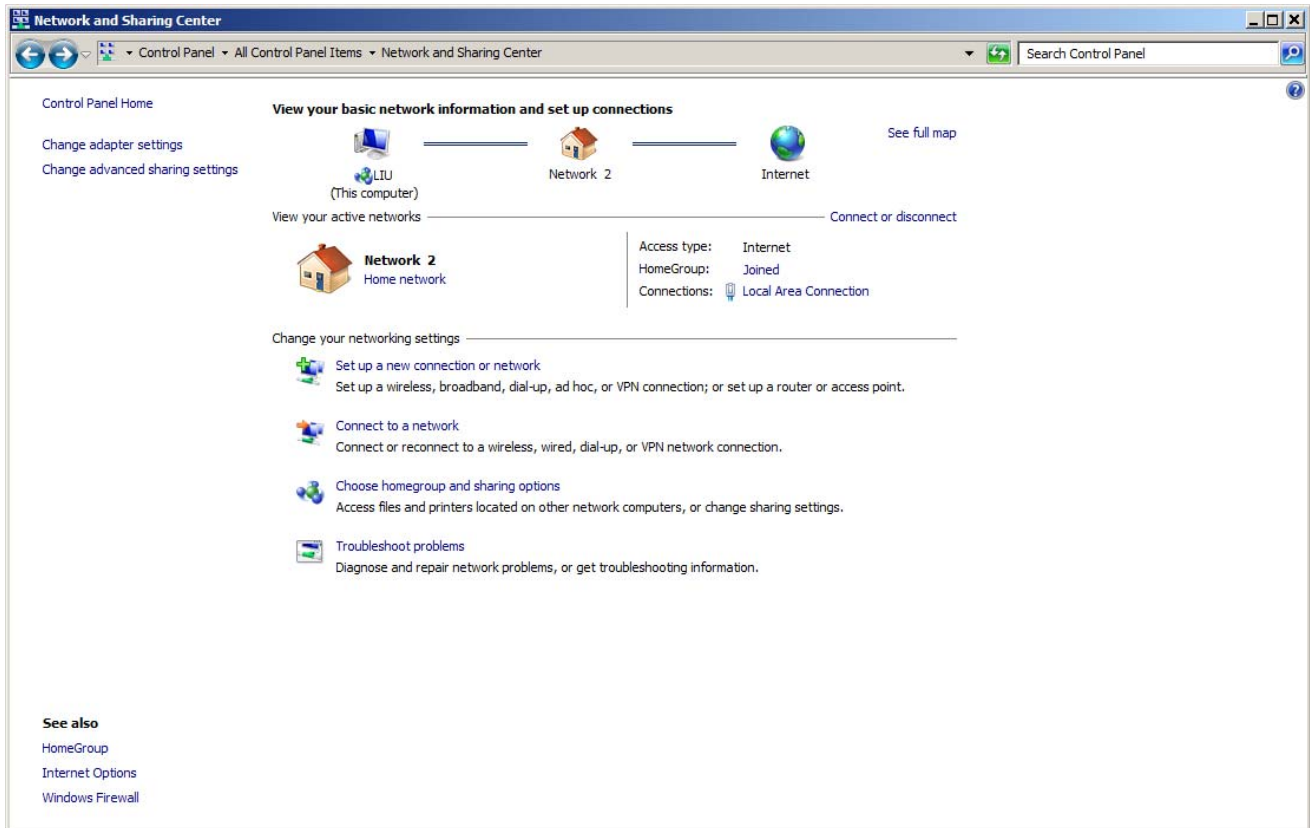
Remember this password

Domain (optional):

6, 点击「Close」,

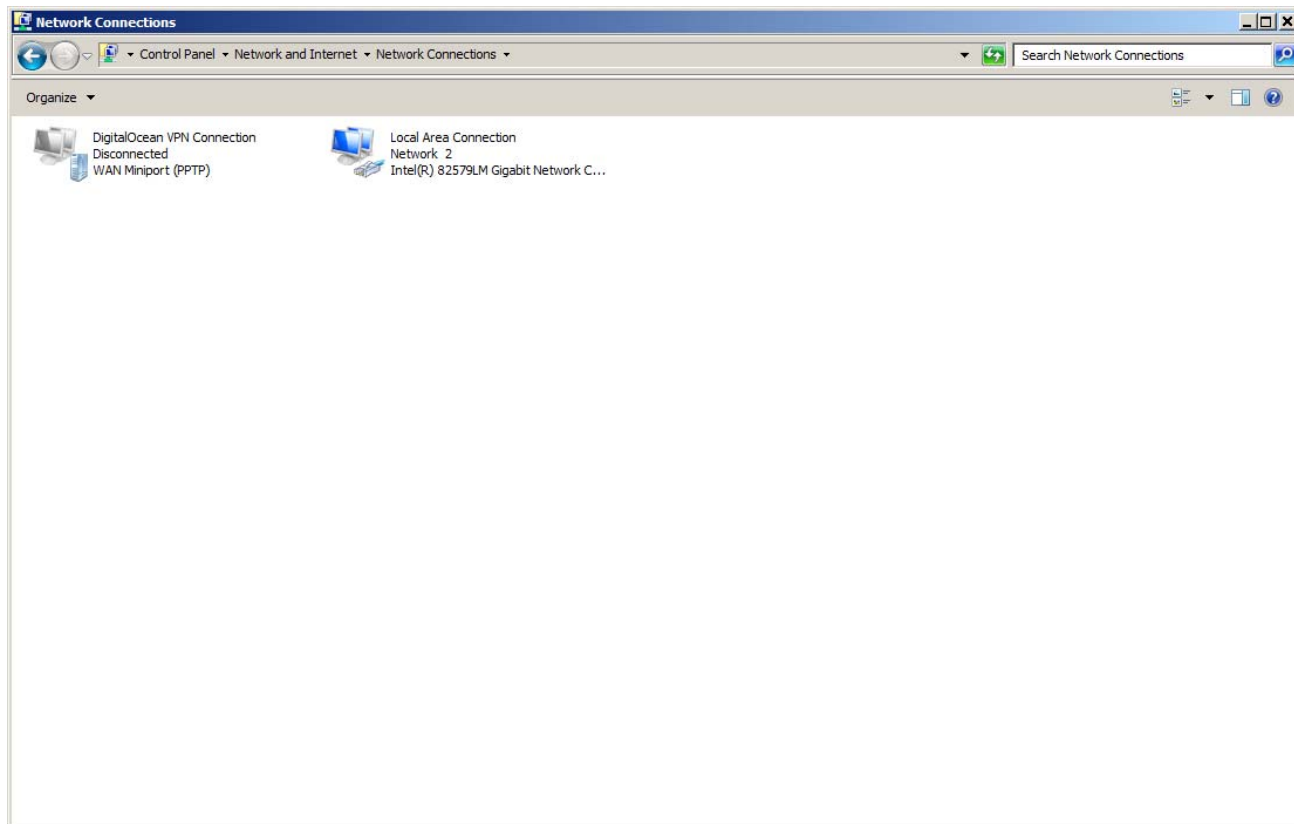


7, 回到网络设置的界面, 点击「Change adapter settings」,





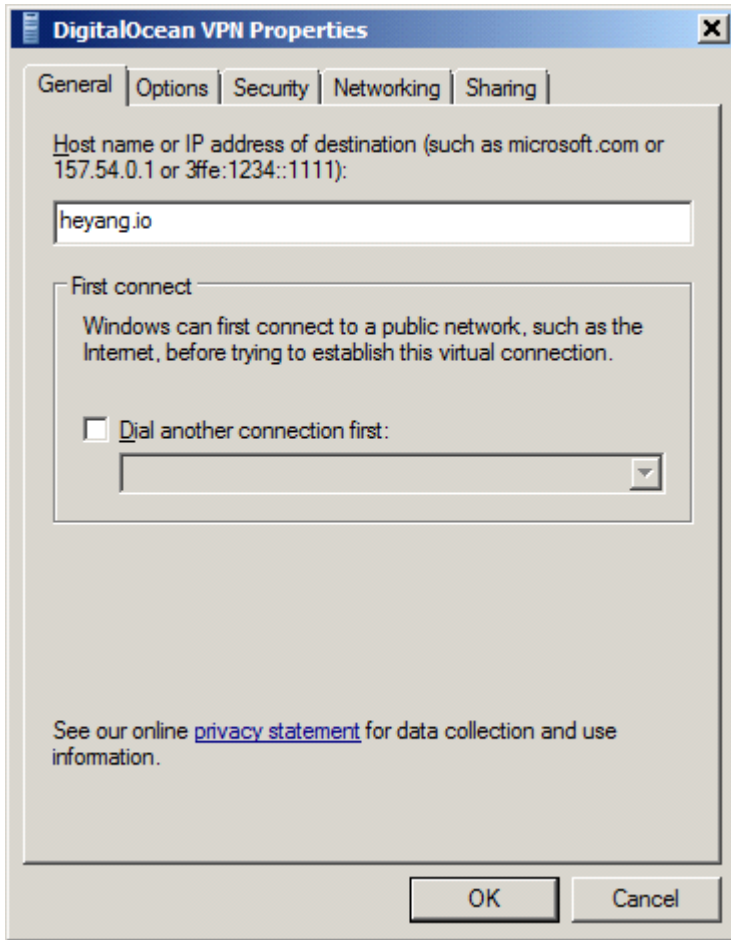
8, 双击刚刚建立的连接（「Digital Ocean VPN Connection」）。



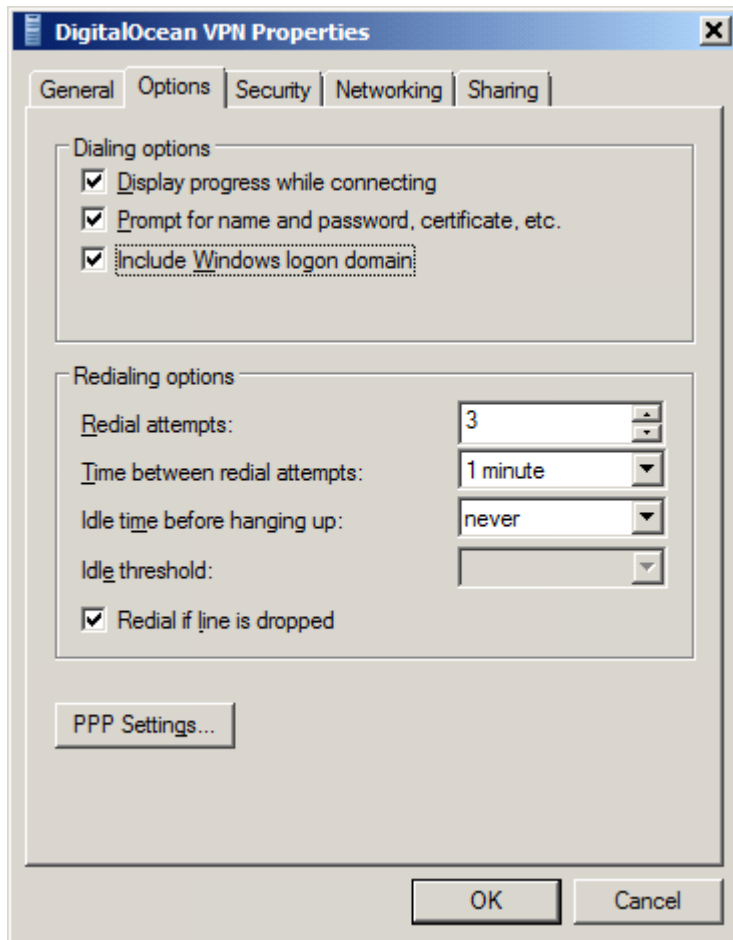
9, 点击「Properties」(属性),



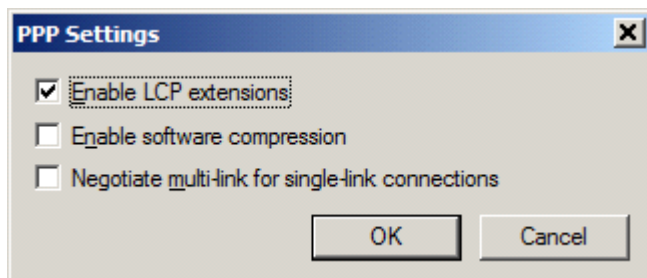
10, 如图设置,



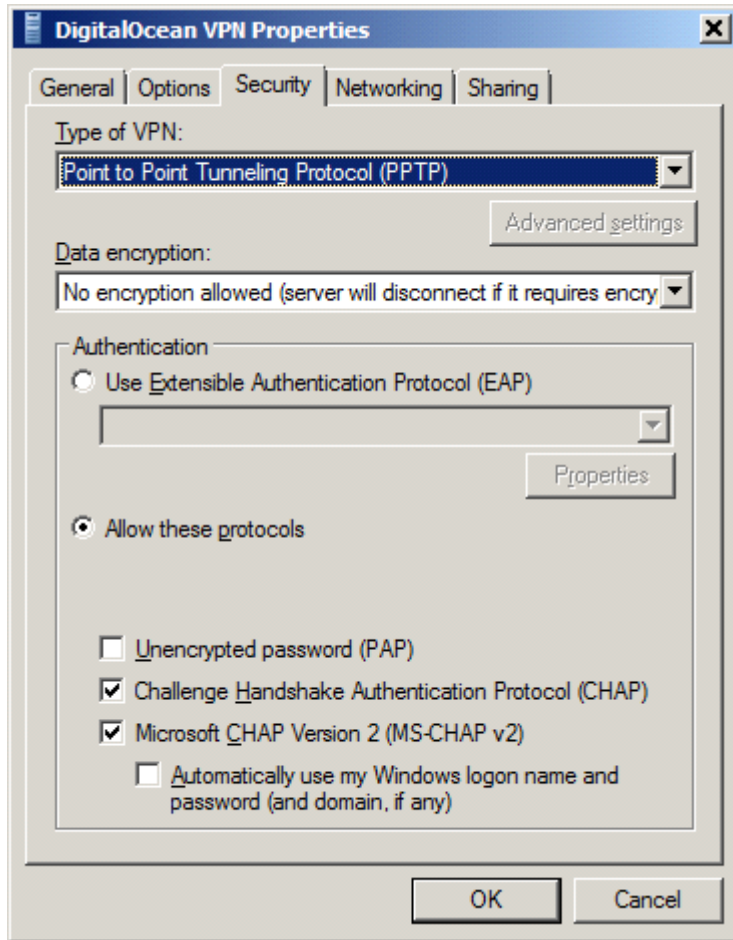
11, 如图设置,



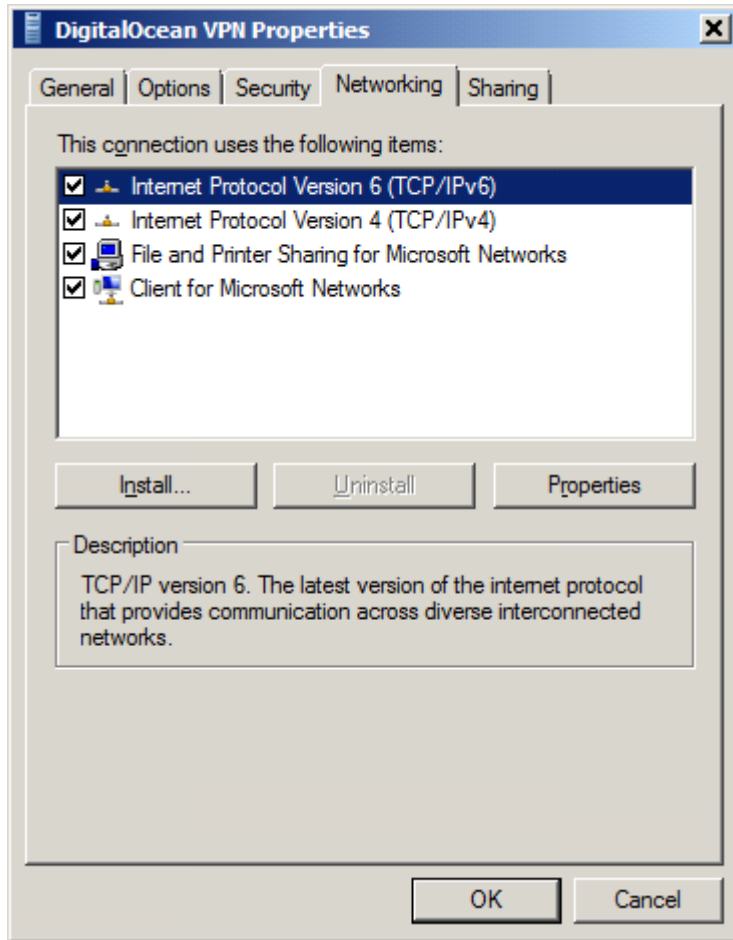
[PPP Setting] 如图设置,



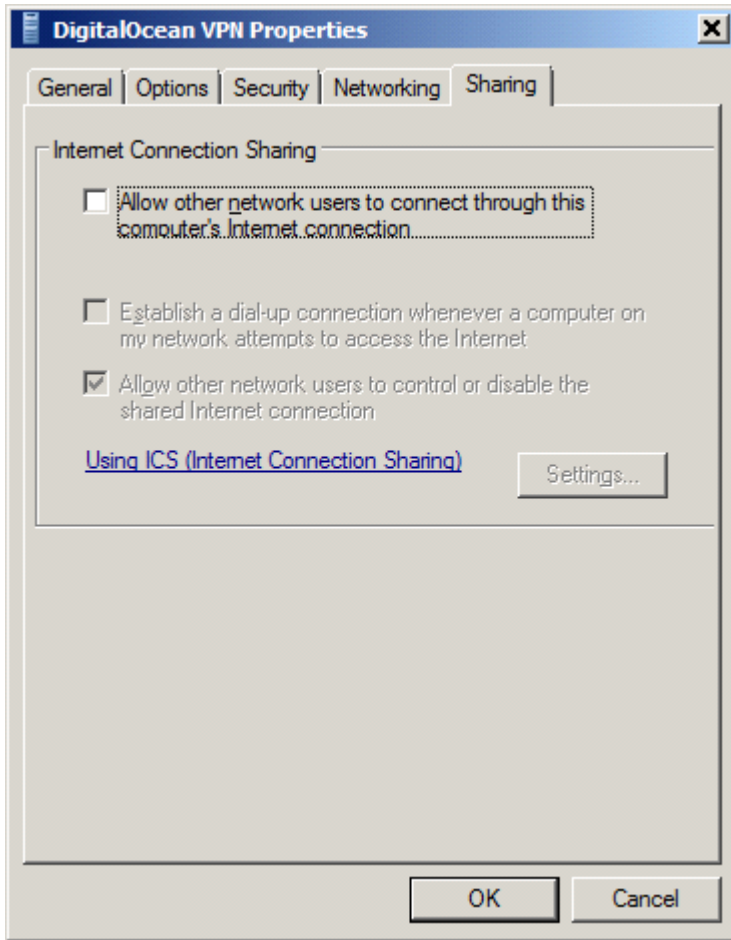
12, 如图设置,



13, 如图 (不用设置),



14, 如图设置 (无关紧要),



15, 退回到这个界面, 点击「Connect」, 连接即可,

